



prestige
residence



imagine...



contents

alanya	the development	location	general features	the site	living room	kitchen	bedroom	bathroom	A&D floor plans & 3D plans	B&C floor plans & 3D plans	penthouse floor plans
04-05	06	07	08	09	10-11	12-13	14-15	16-17	18-19	20-21	22-23



Red Tower



Alanya at night



Dim River

alanya

Alanya is a pretty town inside the borders of Antalya, on the eastern side of the bay carrying the same name. A diversity prevails over the land, with natural figures of high mountains, wide green meadows, plateaus and innumerable rivers. The peninsula of Alanya, surrounded by its city walls, extends to the south of the western Taurus Mountains and is separated from these mountains by broad meadows. Related to its geographical structure, this little town of the Mediterranean Coast possesses the typical climate of this region: summers are hot and dry, while winters are temperate and rainy. Suitably, agricultural activities are active on the fertile plain of Alanya, with greenhouses and banana plantations spread over the area.

Along with these natural beauties, historical and archeological values of this land, named Korakesion during the Hellenistic period, amaze the sightseers visiting the region. Going under the hegemony of Romans and Byzantines, the city changed its name then to 'Kalanoros', until the Seljuk sultan Alaeddin Keykubat renamed it "Alaiye" in 1220.

Filled with the traces of history interspersed with wonderful views of nature, Alanya today, has become one of the most important holiday resorts of Turkey. Its modern and high capacity touristic establishments with various facilities, complement the requisites of a good vacation.

With respect to transportation, Alanya is usually reached via Antalya. Flights from all the major cities of Turkey and Europe arrive at the international airport in Antalya, from where intercity buses are available for traveling to Alanya. Another alternative is to reach Alanya by sea, taking one of the cruises departing from Istanbul.



economy

Many tourists from all around the world vacation in Alanya all year around. Tourists are drawn to the area because of reasonable prices, pleasantly warm weather, sandy beaches, access to historic sites, and fine cuisine. Beach activities frequently include wind surfing, parasailing, and banana boating. During winter tourists enjoy various winter sports (skiing, snowboarding, tracking etc). Golf courses which serve all year around are easily accessible. Nightclubs and bars aimed at tourists are numerous. A height restriction in the city keeps high rise hotels to the

east and west of the city, preserving its skyline at the expense of greater tourist potential.

The tourist industry here is worth over 1.2 billion euros, and is therefore the principal industry, though the area is known for its many fruit farms, particularly lemons and oranges, and large harvests of tomatoes and cucumbers. Alanya is generating 10% of the tourism revenue in Turkey.





the development

Built on a hill surrounded by beautiful greenery, your residence will have a peaceful and quiet environment with a unique view of Alanya Citadel combined with the sea and mountains. With PRESTIGE RESIDENCE your family will also have many advantages as the complex is created to be your very own holiday retreat. The development includes walking paths, basketball, volleyball and tennis courts, swimming pool, waterslides, children's park and a magnificent view. With PRESTIGE RESIDENCE we can introduce you to a new and wonderful life.





area

We offer a lifestyle that will not only meet your practical needs but also enhance every moment of your lives. A different world designed for you, located within the Tosmur and Oba borders and only four km from downtown. You can enjoy the light winds, take in the wonderful mountain scenery and watch the crystal blue waters of the Mediterranean sea all day long.

shopping

Just a stone's throw from PRESTIGE RESIDENCE, are some of Alanya's finest shops including the brand new all inclusive shopping and Entertainment centre ALANYUM. With a fantastic selection of stores Alanyum is the one-stop destination for all your needs, including fashion, home furnishing, home entertainment, general supermarket, and much more. You can also find many reputable furniture stores nearby.

transport

Travelling from place to place in Alanya without a car is easy thanks to an excellent bus network and friendly taxi services everywhere. Although Prestige Residence is located in a tranquil location, transport links into Alanya centrum are constant from the main street which is 150 metres from the development. The famous Dolmus bus service is a favoured way to get around.

prestige residence

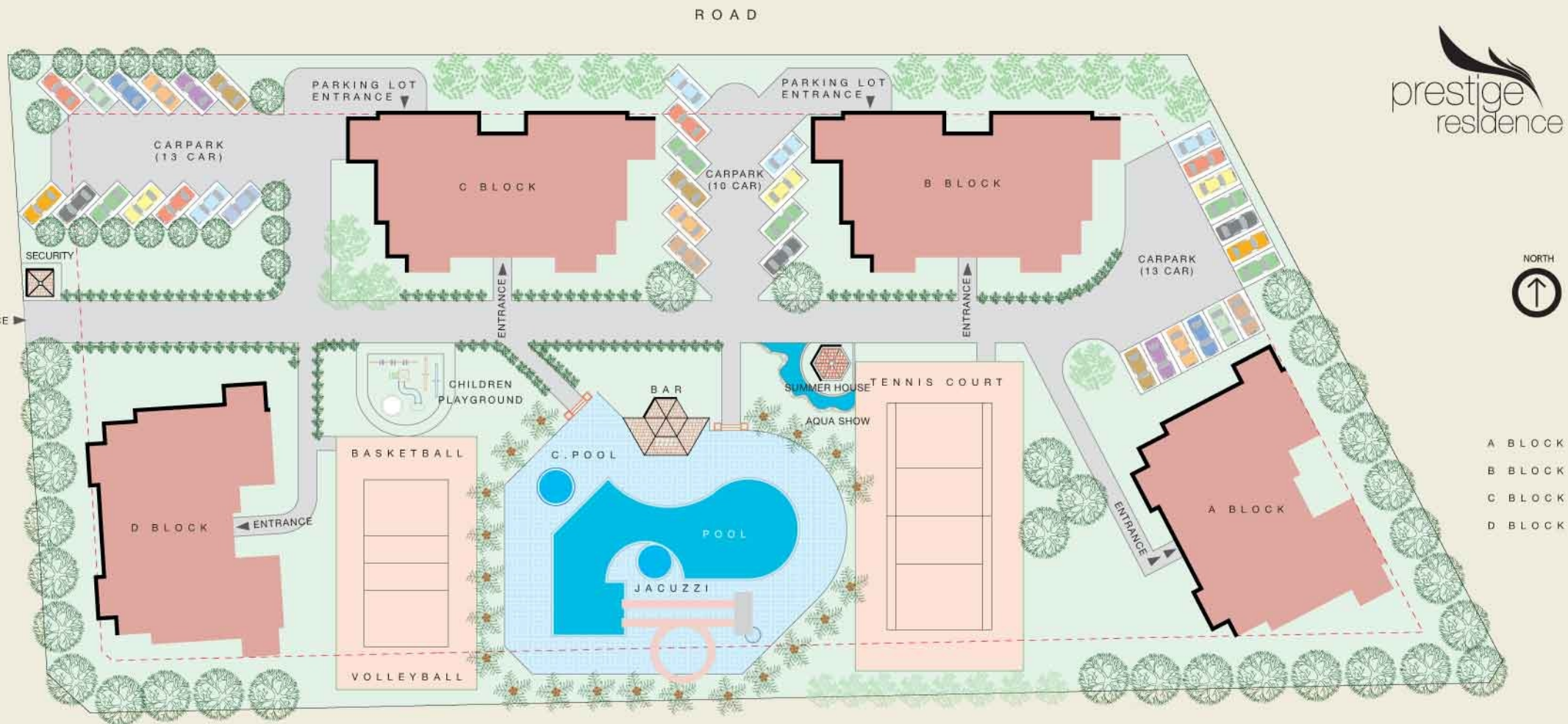
leisure facilities

- Swimming pool
- Children's pool
- Children's playground
- Jacuzzi
- Waterslides
- Tennis court
- Basketball court
- Volleyball court
- Sauna
- Fitness centre

security & safety

- Video door entry-phone
- Separate flat for doorman
- Entry and security points
- Fire exits





Site Plan of Prestige Residence

GENERAL PLAN

Prestige Residence Site

Imagine a perfect holiday retreat with scenic views and a peaceful atmosphere. The apartments at Prestige Residence are modern and spacious with high quality features intended to cater to your ever need set within a secure and enjoyable environment.

Prestige Residence Blocks rise to 9 floors providing 2 and 3 bedroom apartments plus penthouses. The Apartments all offer fantastic views and you can choose to overlook the landscaped gardens and swimming pool, or look out towards the Mediterranean sea, Alanya Citadel or the Taurus mountains.

living room





easy comfort

Your every need has been taken into consideration when designing the internal layouts of each apartment at Prestige Residence. We go back to basics to give you a relaxing and low maintenance environment yet ensure all the fixtures and fittings are of a high technological standard.

- Satellite Dish
- Wireless ADSL internet
- Telephone & Antenna points
- Double Glazed Windows
- Shutters
- Fly whisked windows
- Air conditioning in all rooms
- American style internal doors
- Heat Resistant walls
- Recessed Spot lights
- Feature coving and skirting
- Ceramic tile flooring

kitchen





relaxed modern living

The kitchen exudes modern simplicity with custom designed units integrated with high quality Siemens appliances. Opening into the living area and the balcony you can enjoy a unique dining experience.

- Custom designed modular kitchen furniture
- Granite worktop
- Ceramic floor tiles
- Five pieces of Siemens kitchen appliances including;
 - Fridge
 - Integrated oven
 - Worktop cooker
 - Chrome kitchen fan
 - Dishwasher

bedroom





laid-back luxury

To create a calm retreat our natural design continues into the bedrooms where we focus on the finer details. There is an abundance of light complimented by large windows and doors which open into generous balconies. Well sized rooms allow you to furnish the bedrooms luxuriously yet relax in an intimate environment.

- Telephone and antenna point
- Air conditioner
- Ceramic floor tiles
- Feature coving and skirting
- Access to Balcony

bathroom





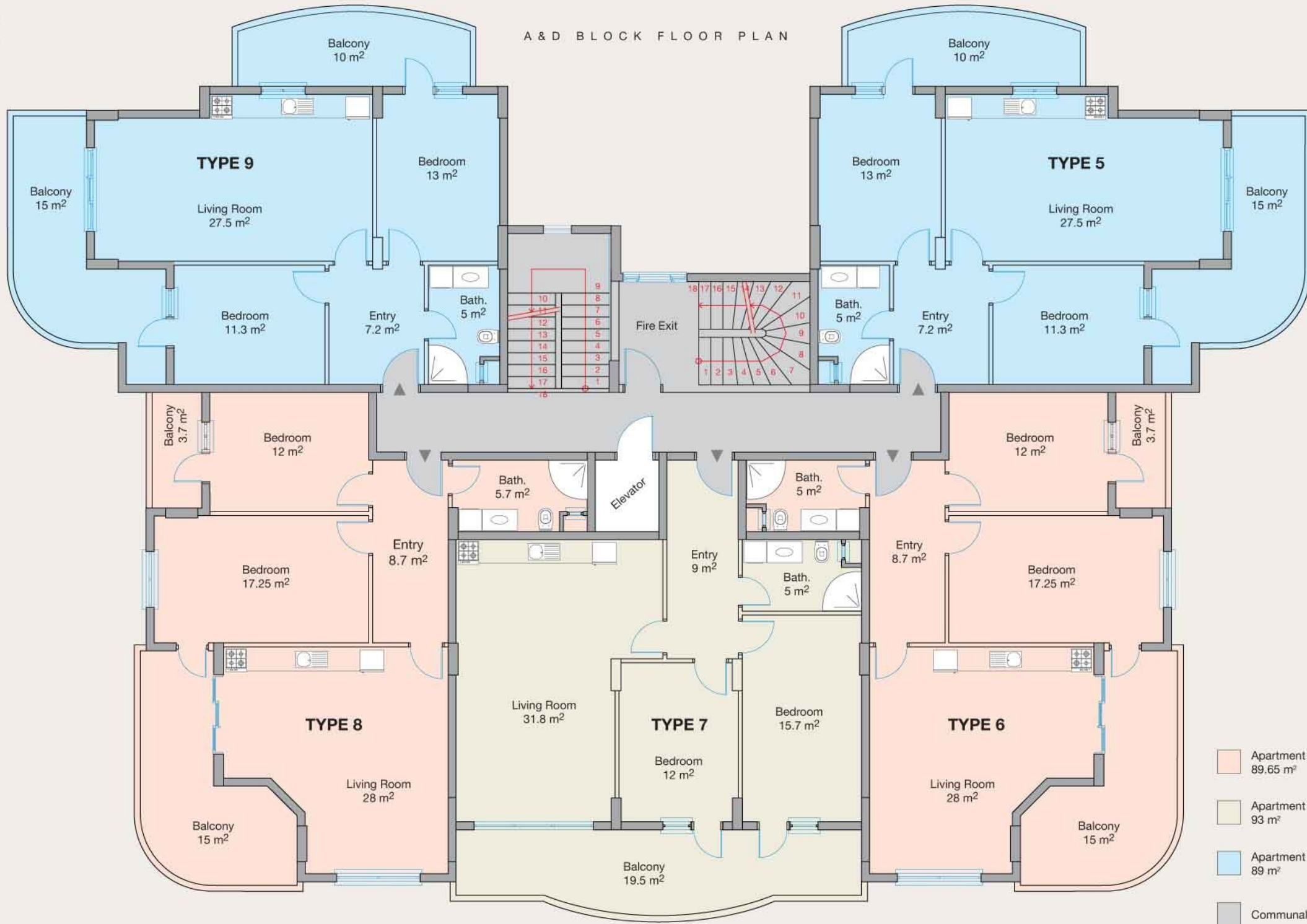
tranquil haven

Utilising a natural colour palette with modern touches, the bathroom has an understated style with an inviting ambiance providing you with a serene and refreshing retreat.

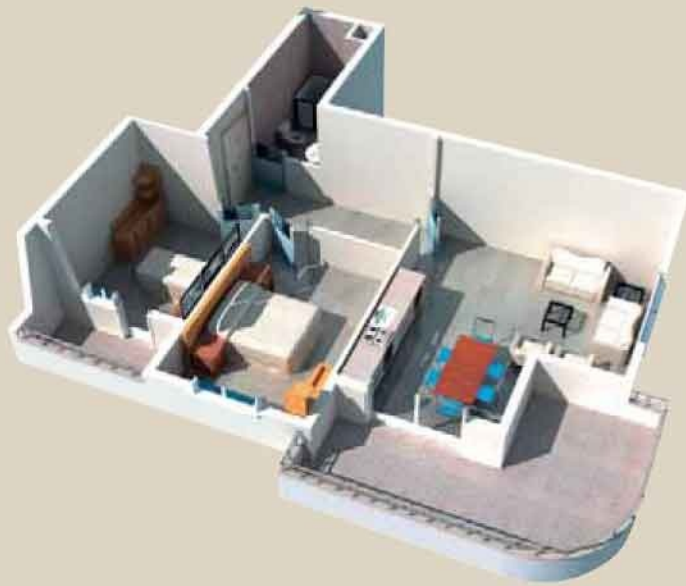
- Siemens washing machine
- Siemens Hot water electric boiler
- Bordered ceramic floor and walls
- Jetted shower cabin
- Granite topped vanity unit



A & D BLOCK FLOOR PLAN



- Apartment Type 6 & 8
89.65 m²
- Apartment Type 7
93 m²
- Apartment Type 5 & 9
89 m²
- Communal Area



type 6 & 8

type 7



type 5 & 9



Prestige Residence Blocks A&D

The apartments in BLOCK A-D have two bedrooms and an American kitchen. The block has a total of 45 flats with 5 on each floor. The area of the flats varies from 89 to 93 square meters. On the top floor of each block there are 5 penthouses with 2 floors in each apartment and with a floor space between 180 to 190 square meters.



B & C BLOCK FLOOR PLAN





type 1 & 4



type 2

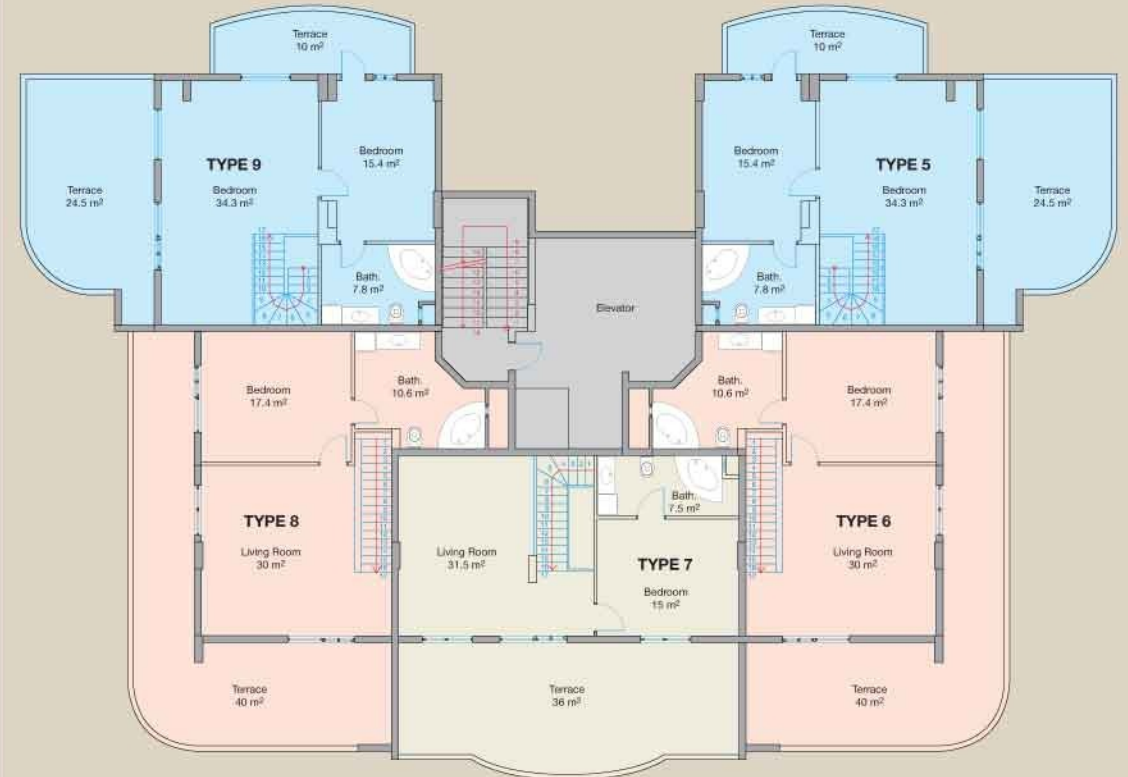
Prestige Residence Blocks B&C

The apartments in BLOCK B & C have two or three bedrooms and 2 bathrooms with an American kitchen. This block has a total of 36 flats with 4 on each floor. The area of the flats varies from 114 to 116 square meters. On the top floor of each block there are 4 penthouses with 2 floors in each apartment and a floor space between 230 to 240 square meters.



A & D BLOCK 9th FLOOR PLAN

- Apartment Type 6 & 8
89.65 m²
- Apartment Type 7
93 m²
- Apartment Type 5 & 9
89 m²
- Communal Area



A & D BLOCK PENTHOUSE PLAN

- Apartment Type 6 & 8
98 m²
- Apartment Type 7
90 m²
- Apartment Type 5 & 9
92 m²
- Communal Area



B & C BLOCK 9th FLOOR PLAN

- Apartment Type 1 & 4
114 m²
- Apartment Type 2
116 m²
- Apartment Type 3
116 m²
- Communal Area



B & C BLOCK PENTHOUSE PLAN

- Apartment Type 1 & 4
116.5 m²
- Apartment Type 2
120.5 m²
- Apartment Type 3
120.5 m²
- Communal Area

prestige residence



Şekerhane Mh. Tevfikiye Cd. Besim Ağa Sk.
Baba Apt. No: 4 07400 Alanya / TURKEY
Tel: + 90 242 511 99 90 - 513 36 21
Fax: + 90 242 513 03 64

www.prestigeresidence.net
www.toroslar.com.tr
info@toroslar.com.tr



TOROSLAR
Construction & Investment Co.
www.toroslar.com.tr